

Ultra-Miniature Load Cell

Model 8416

Code:	8416 EN
Delivery:	ex stock
Warranty:	24 months

CAD data 2D/3D for this sensor:
Download directly at www.traceparts.com
Info: refer to data sheet 80-CAD-EN



NEW
now measuring ranges
from 0 ... 20 N



- Inexpensive
- Measuring ranges from 0 ... 20 N to 0 ... 5 kN
- Dragchain cable
- Option standardization the nominal sensitivity
- Option temperature compensated range
-20 °C ... 90 °C

Application

Due to their extremely compact design, these load cells can be used wherever static or dynamic load forces have to be measured in very tight spaces.

Model 8416 is perfect for use in micro-technology and just as suitable for measuring tasks in the research and development sector.

Typical applications for these ultra-miniature compression load cells include

- ▶ Equipment construction
- ▶ Production lines
- ▶ Measuring and control equipment
- ▶ Testing systems
- ▶ Handling gear
- ▶ Universal testing machines, etc.

Description

The ultra-miniature compression load cell model 8416 is a flat, circular disc, the bottom of which is sealed with a cover. The load application button for receiving the compression forces is an integrated part of the sensor.

The sensor element inside the body carries a strain gauge full bridge which outputs voltage directly proportional to the measurement variable upon application of force.

The short nominal measurement distance of the ultra-miniature compression load cells due to their design provides a high degree of rigidity. If needed, the nominal characteristic value can be standardized in the sensor connection cable. This allows for quick and easy interchange or simultaneous connection of several sensors to a single evaluation unit.

Technical Data

Order Code	Measuring Range	Dimensions [mm]					Resonance Frequency [kHz]
		ø D1	ø D2	ø D3	H1	H2	
8416-5020	0 ... 20 N	10.6	3	7.6	4.5	5	6
8416-5050	0 ... 50 N	10.6	3	7.6	4.4	5	6
8416-5100	0 ... 100 N	10.6	3	7.6	4.5	5	6
8416-5200	0 ... 200 N	10.6	3	7.6	4.5	5	20
8416-5500	0 ... 500 N	10.6	3	7.6	5.5	6	18
8416-6001	0 ... 1000 N	10.6	3	7.6	6.5	7	30
8416-6002	0 ... 2000 N	10.6	3	7.6	6.5	7	45
8416-6005	0 ... 5000 N	12.6	3	7.6	6.5	7.5	80

Electrical values

Bridge resistance:		
measuring range $\leq 0 \dots 50$ N	$\leq 0 \dots 50$ N	500 Ω , nominal*
measuring range $\geq 0 \dots 100$ N	$\geq 0 \dots 100$ N	350 Ω , nominal*
Excitation:		5 V DC
Nominal sensitivity:		
measuring range $\leq 0 \dots 50$ N	$\leq 0 \dots 50$ N	5 ... 30 mV/V, nominal*
measuring range $\geq 0 \dots 100$ N	$\geq 0 \dots 100$ N	0.8 mV/V, nominal*
Insulation resistance:		> 10 M Ω

*Deviations from the stated value are possible.

Environmental conditions

Nominal temperature range:		
measuring range $\leq 0 \dots 50$ N	$\leq 0 \dots 50$ N	+ 15 °C ... + 60 °C
measuring range $\geq 0 \dots 100$ N	$\geq 0 \dots 100$ N	+ 15 °C ... + 70 °C
Operating temperature:		0 °C ... + 80 °C
Influence of temperature on zero:		
measuring range $\leq 0 \dots 50$ N	$\leq 0 \dots 50$ N	$\leq \pm 0.5$ % F.S./10 K
measuring range $\geq 0 \dots 100$ N	$\geq 0 \dots 100$ N	$\leq \pm 0.3$ % F.S./10 K
Influence of temperature on sensitivity:		
measuring range $\leq 0 \dots 50$ N	$\leq 0 \dots 50$ N	$\leq \pm 0.5$ % Rdg./10 K
measuring range $\geq 0 \dots 100$ N	$\geq 0 \dots 100$ N	$\leq \pm 0.3$ % Rdg./10 K

Mechanical values

Non-linearity:		< 0.5 % F.S.
Hysteresis:		0.25 % F.S.
Non-repeatability on unchanged mounting position:		< 0.1 % F.S.
Deflection:		approx. 20 μ m
Static overload safe:		150 % of capacity
Dynamic performance:		
recommended		50 % of capacity
maximum		70 % of capacity
Material:		High-grade stainless steel 1.4542

Electrical connection:

Measuring range $\leq 0 \dots 50$ N shielded, TPE coated cable with bare ends for soldering, length approx. 2 m, bending radius ≥ 30 mm; circuit board (70 x 8 mm) with balancing resistors 30 cm away from the cable's end

Measuring range $\leq 0 \dots 100$ N shielded, dragchain TPE coated cable with bare ends for soldering, length approx. 2 m, bending radius ≥ 10 mm

Protection class:	acc. to EN 60529	IP54
Wiring code:		
white	excitation voltage	positive
brown	excitation voltage	negative
yellow	signal output	positive
green	signal output	negative

Dimensions:	refer to table and scale drawing	
General tolerance of dimensioning:	acc. to ISO 2768-f	
Weight:	approx. 10 g without cable	
Design characteristic:	at measuring ranges $\leq 0 \dots 50$ N cover lids are glued	

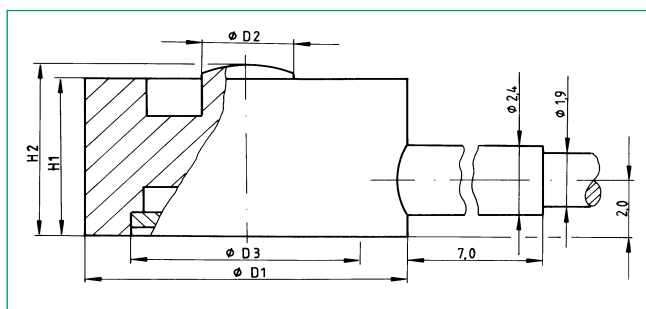
Mounting Instructions

The measuring force is to be applied centrally and free from lateral force. To prevent contact at just a few points, ensure that the sensor is installed on a flat surface.

The sensor can be secured using silicon, wax or an adhesive for example. Do not subject the sensor to lateral clamping forces as these would result in measurement errors.

When handling and installing the sensor, ensure that the cable outlet and sensor cable are not subjected to excessively high tensile or lateral forces. Strain relief may be necessary.

Dimensional drawing model 8416



The CAD drawing (3D/2D) for this sensor can be imported online directly into your CAD system.

Download via www.burster.com or directly at www.traceparts.com. For further information about the burster traceparts cooperation refer to data sheet 80-CAD-EN.

Order Information

Ultra-miniature compression load cell,
measuring range 0 ... 200 N

Model 8416-5200

Accessories

Mating connector	
12 pins, to all burster table housings	Model 9941
9 pins, to SENSORMASTER and DIGIFORCE®	Order Code: 9900-V209
Mounting of a connector to the sensor cable	Order Code: 99004
Only for connection of 8415 to SENSORMASTER model 9163 desktop version	Order Code: 99002

Amplifiers, sensor supplying instruments and process controllers as e.g. digital measuring indicator for strain gauges model 9180, model 9163, modular amplifier model 9243

refer to section 9 of the catalog.

Option

Standardization of the sensitivity in the sensor connection cable, only for measuring ranges $> 0 \dots 100$ N to 0.8 mV/V $\pm 0,25$ % ...-V008

Extension of temperature compensated range for measuring ranges $\geq 0 \dots 100$ N to -20 °C ... 90 °C ...-V420

Factory Calibration Certificate (WKS)

Calibration of a load cell separately as well as connected to an indicator. Standard is a certificate with 11 points, starting at zero, running up and down in 20% increments covering the complete measuring range for preferential direction. Special calibrations on request. Calculation of costs by base price plus additional costs per point.

Order Code 84WKS-84...